



PRODUCT INFORMATION

TT Touch Infinity Control

-- Multivariate Control Application (App)



×



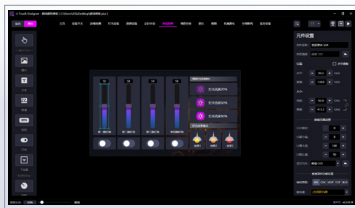
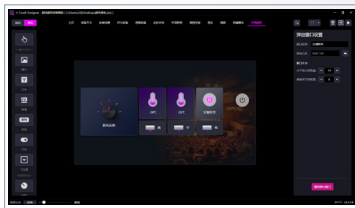
×

HarmonyOS

- Operating system compatible with WIN 8/10/11
- Compatible with Android & Hongmeng systems.

> FEATURES

Touch means endless control. It is a cloud-manageable software platform, built on a standard network architecture, fully self-developed, and an open software ecosystem.

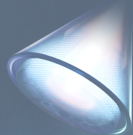


Model:	π Touch
Operating system:	Windows 8/10/11; Android and Hongmeng systems
Network protocols:	RTSP,OSC,UDP,TCP,WebSocket,Modbus
Interface language:	Supports Chinese and English
Customization:	Highly customizable interface layout
Communication method :	Wired, Wireless (wifi)
Compatible devices:	Support various IoT devices and hosts compatible with the above protocols
Data type:	Support UTF-8、GBK、Hex、Int、Float、Double



Touch 无限极控

> FEATURES

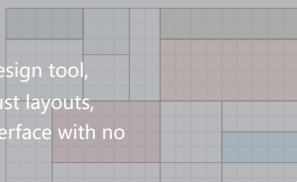


π Touch is a powerful and easy-to-use central control software suitable for a variety of scenarios such as modern smart homes, industrial Internet of Things, theaters, banquet halls, lecture halls, conference rooms, audio-visual rooms, and cultural tourism.

It supports remote control via wired and wireless networks, is compatible with multiple communication protocols, and provides a highly customized editing interface to receive status feedback from the IoT host in real time

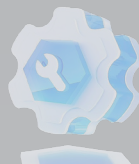
① Highly Customizable Interface

Provides an intuitive drag-and-drop interface design tool, allowing users to freely design control panels, adjust layouts, icons, and functions, and create a personalized interface with no prior experience required.



② Multi-Protocol Compatibility

Supports multiple communication protocols such as TCP, UDP, WebSocket, OSC, Modbus, RTSP, RS-232, and RS-485.



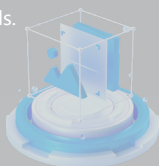
③ Data Types

Support sending and receiving UTF-8, Hex, Int, Float, Double and other data types to meet the needs of different devices and applications.



④ Preset Templates

Switch between different templates with one click, send multiple data protocols with one click, to meet various usage needs.



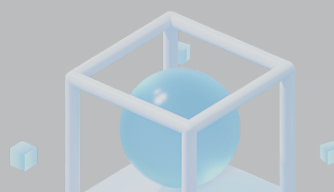
⑤ Multi-Control Terminal Interaction

Supports multi-control terminals to work together as a large control platform.



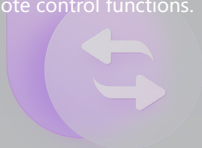
⑥ Efficient Integration Capability

It can seamlessly integrate with various systems such as smart home, industrial automation, stage lighting, audio-visual equipment, etc., for integrated control.



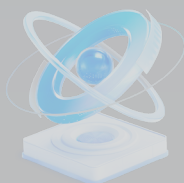
⑦ Remote Control

The software does not require a central control system host \device and can be installed through computers, mobile phones and tablets to achieve remote control functions.



⑧ Flexible Connectivity

Devices can be connected via Wi-Fi or Ethernet, adapting to various network environments to ensure stable and reliable control.



⑨ Online Publishing

Connect to the network through the editing side, and support remote publishing to the tablet for use.



⑩ Timing and Scheduling

Supports custom timed tasks and batch scheduling tasks for automated device control.



⑪ Real-Time Status Feedback

Real-Time Status Feedback Real-time monitoring of device operating status, including on/off status, parameter settings, and connection status, for timely maintenance of device states.

⑫ RTSP Streaming Media

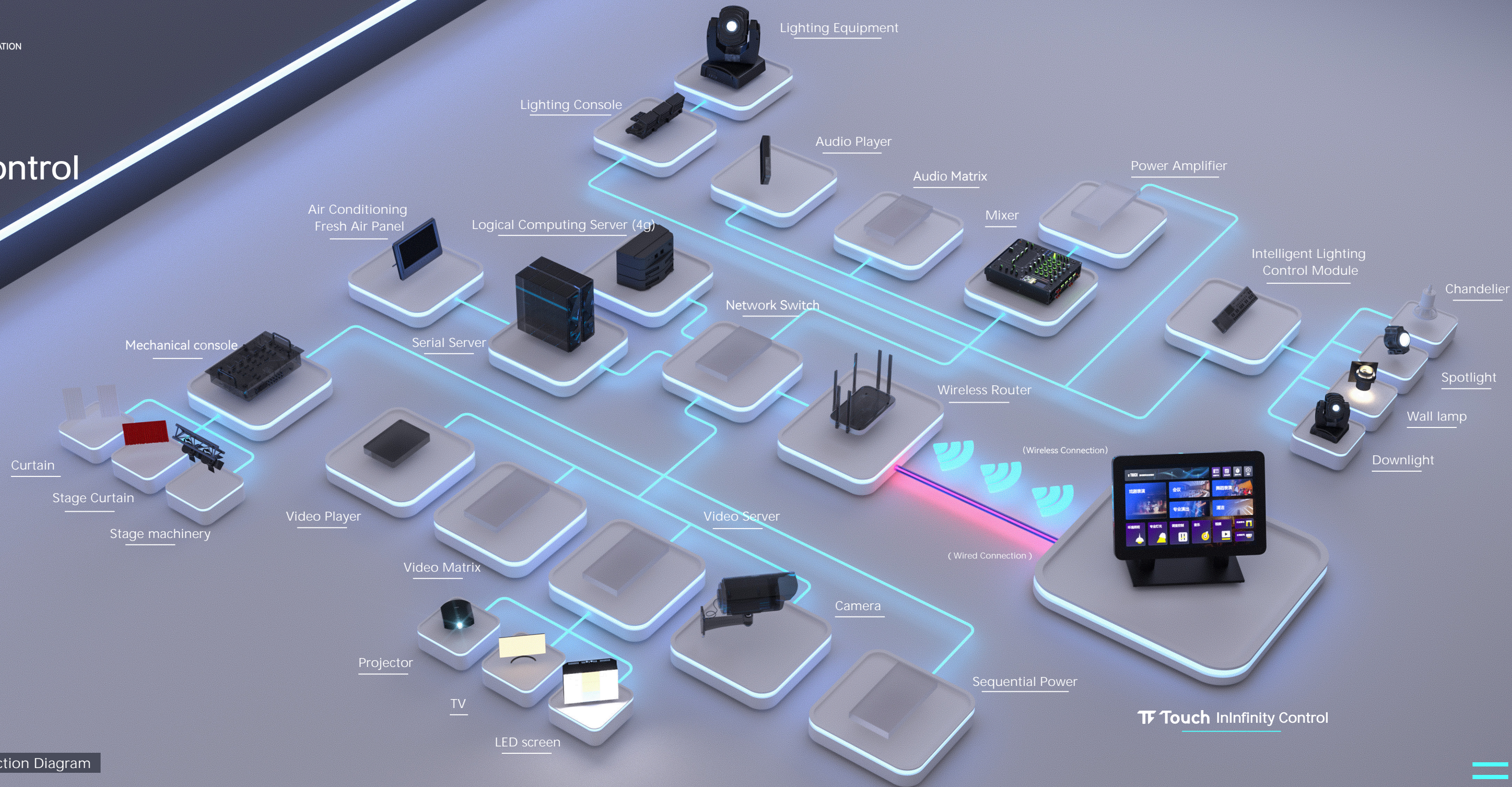
Integrated with RTSP protocol, supporting connection and playback of surveillance cameras and video conferencing equipment.

⑬ Smart Home Extension

Seamlessly integrates with popular smart home platforms such as Xiaomi Mi Home, Tuya Smart, eWeLink, BroadLink, Midea, and EZVIZ.



Touch InInfinity Control



Application Connection Diagram

